

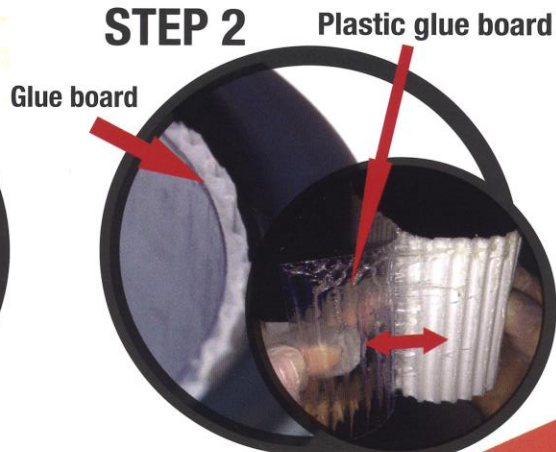
Guideline for Gravitraps Monitoring Application

STEP 1



Fill in the details on label

STEP 2



Use plastic glue board only

STEP 3



Set trap, STICKY side facing out

STEP 4



Pour until water runs from side holes

STEP 5



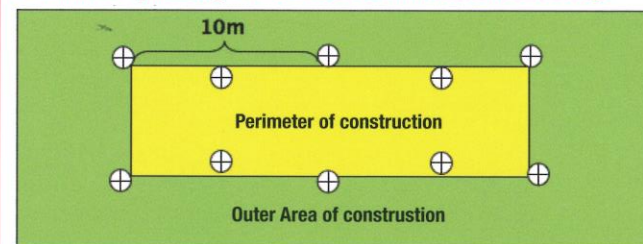
Gravitraps is now ready

STEP 6



Place Gravitraps in recommended areas

Perimeter placing of construction site monitoring:



Place Gravitraps within 5-10m in a zigzag formation

Please note.. Gravitraps has to be checked at least once a week



Gravitraps Function:

- Designed by NEA to attract and trap adult female *Aedes* mosquitoes that are looking for sites to lay eggs.
- Monitor the mosquito population in the area and its vicinity.
- As a communication tool.



Distributed by:
Avoir International Pte Ltd
5 Upper Aljunied Link #06-02,
Quartz Industrial Building
Singapore 367903
T: +65 9621 1180